



# GIFU

The Heartland of Japan



ぎふ



Gifu Prefecture



Official Tourism Website : <http://travel.kankou-gifu.jp/en/>  
Blog : <http://gifucrossroads.wordpress.com/>  
Facebook Page : "Gifu Crossroads"

# Welcome to GIFU: The Heartland of Japan

Discover the soul of Japan in Gifu Prefecture.

Gifu is home to a living culture, which thrives amongst the majesty of nature and pristine water. Traditions of old are passed on with the changing seasons, giving life to a rich heritage of craftsmanship, culture, and history.

## Tradition



## World Heritage Site



**Hida Northern Gifu**

- Shinhotaka (Takayama City)
- Okuhida Hot Spring Villages (Takayama City)
- Hida Furukawa Japanese Candles (Hida City)
- Old Quarter of Hida Takayama (Takayama City)
- Ichii Ittobori Carvings
- Osaka Falls (Gero City)
- Gero Hot Spring (Gero City)
- Sarubobo

**Mino Southern Gifu**

- World Heritage Site Shirakawa-go (Shirakawa Village)
- Gujo Ski Resort Areas (Gujo City)
- Gujo Odori Dance Festival (Gujo City)
- Udatsu-Lined Old Streets (Mino City)
- Seki Swords (Seki City)
- Ukai Cormorant Fishing (Gifu City)
- Masu Wooden Measures (Ogaki City)
- Magome-juku Post Town (Nakatsugawa City)
- Mino Yaki Ceramic Ware

## Crafts



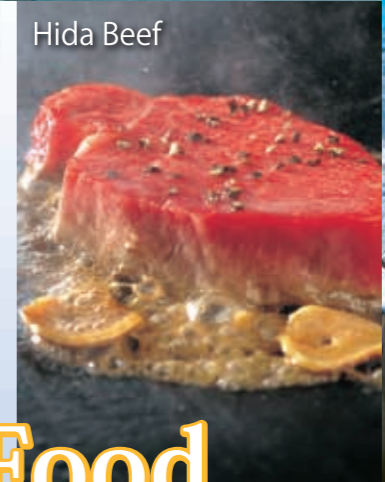
## Festivals



## History



## Food



## Hot Springs



## Nature



# Sample Itineraries

Located in the center of Japan between Tokyo and Osaka, Gifu Prefecture has an extensive transportation network including railroads and highways. The region boasts easy access to Tokyo, Kyoto, Osaka, surrounding prefectures and tourist areas.

**H** ... Overnight Stay

**Tour A** Walk the 5<sup>th</sup> Station at Mt. Fuji, try delicious marbled beef and visit the Old Quarter of Hida Takayama.

**5 Nights 6 Days**

Haneda Airport ... Tokyo ... Tokyo Disneyland **H** ... Mt. Fuji (5<sup>th</sup> Station) ... Lake Kawaguchi **H** ... National Treasure Matsumoto Castle ... Shinhotaka Ropeway ... Okuhida Hot Spring Villages **H** ...

World Heritage Site Shirakawa-go ... Hida Takayama (Old Quarter and Hida beef) **H** ... Gujo Hachiman (Food replica-making) ... Cormorant Fishing on the Nagara River **H** ... Nagoya ... Central Japan International Airport

**Tour B** Experience nature and traditional crafts in central Japan.

**4 Nights 5 Days**

Kansai International Airport ... Kyoto **H** ... Kanazawa (Kenroku-en Garden) **H** ... World Heritage Site Shirakawa-go ... Hida Takayama (Hida beef) **H** ...

Hida Takayama (Morning Market) ... Mino (Japanese paper-making) ... Tajimi (Pottery-making) ... Nagaragawa Hot Spring & Cormorant Fishing **H** ... Central Japan International Airport

**Tour C** Bask in the wonders of the great outdoors and the rejuvenating power of hot springs.

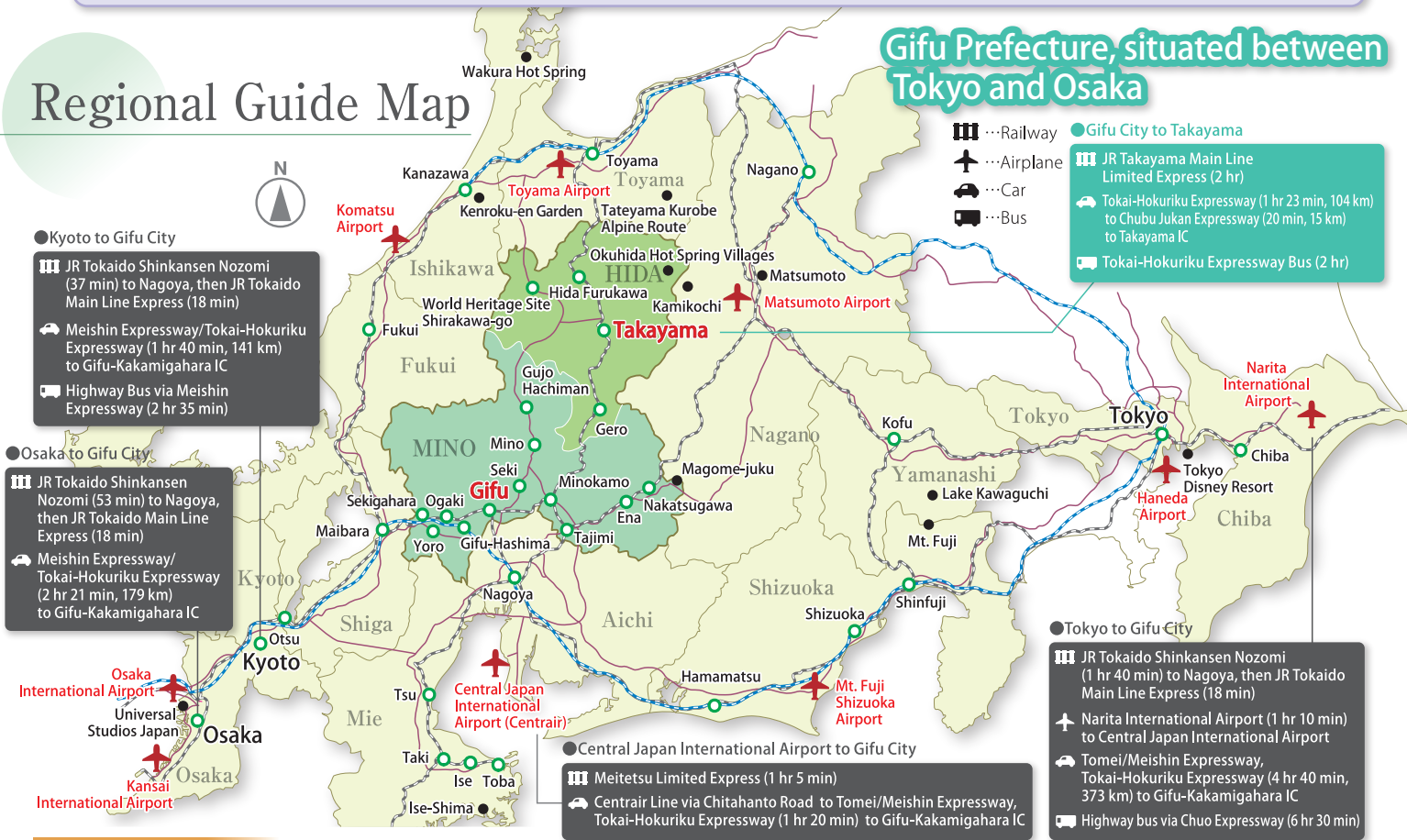
**5 Nights 6 Days**

Kansai International Airport ... Osaka **H** ... Magome-juku ... Gero Hot Spring **H** ... Osaka Falls ...

Hida Takayama **H** ... Tateyama Kurobe Alpine Route ... Unazuki Hot Springs **H** ... Tokyo **H** ... Narita International Airport

## Regional Guide Map

## Gifu Prefecture, situated between Tokyo and Osaka



## Contact

### ● Gifu Prefecture Tourism Federation

Gifu Prefecture Shinkutanku-chosha 4F, 5-14-12 Yabutaminami, Gifu City, Gifu 500-8384 Japan Phone: 058-275-1480 (9 am ~ 5 pm)  
 Closed: Weekends, holidays, New Year's holiday season

### ● Gifu Prefectural Government, Tokyo Branch Office

Prefectural Center 14F, 2-6-3 Hirakawa-cho, Chiyoda-ku, Tokyo 102-0093 Japan  
 Phone: 03-5212-9020 (8:45 am ~ 5:30 pm)  
 Closed: Weekends, holidays, New Year's holiday season

### ● Hida-Mino Tourist Nagoya Service Center

Chunichi Building 4F, 4-1-1 Sakae, Naka-ku, Nagoya City, Aichi 460-0008 Japan  
 Phone: 052-261-2001 (9 am ~ 5:45 pm) Closed: Weekends, holidays, New Year's holiday season

### ● Tourism and International Affairs Bureau, Gifu Prefectural Government

2-1-1 Yabutaminami, Gifu City, Gifu 500-8570 Japan Phone: 058-272-1111 (8:30am~5:15pm)  
 E-mail: c11336@pref.gifu.lg.jp Closed: Weekends, holidays, New Year's holiday season

※The above telephone numbers are listed in the form appropriate for domestic dialing. To call from abroad, dial the International Direct Dialing Number of your country, then "81" (Japan's country code), and finally the telephone number excluding the initial "0".

**12 Mino Washi Japanese Paper** **Crafts**

Mino Washi Japanese paper has a proud tradition of more than 1,300 years and is made using a specialized *nagashisuki* method that allows the beautiful paper to come out thin yet durable like cloth. Mino Washi paper is used in traditional craftwork such as Gifu Japanese umbrellas and Gifu lanterns, and is designated an Intangible Cultural Heritage by UNESCO.



**13 Old Streets of Mino** **History**

The flavor of the Edo Period (17th – 19th century) remains alive in these streets, with their traditional architecture and embellished *udatsu* firewalls. The Mino Washi "Akari" Art Exhibition of Japanese paper sculptures is held in October of each year. These works on display are contributed from all over the country, and their soft, delicate light illuminates the streets, creating a dream-like atmosphere.

**14 Seki Traditional Swordsmith Museum** **Crafts**

Blades have been produced in Seki City for nearly 700 years. The high quality products, which include katana (Japanese swords), kitchen knives, scissors, nail clippers and more, are famous even overseas. The methods used in making traditional katana are on display at the Seki Traditional Swordsmith Museum.



**14 Gujo Odori Dance Festival** **Tradition**

The Gujo *Odori* is counted as one of the three most famous folk dances in Japan. The *terutsuya-odori*, or "all-night dance," held each year from August 13th to the 16th sees tens of thousands of people gather from all around Japan to dance the whole night through.

**16 Lifelike Food Replicas** **Activities**

Enjoy the experience of making wax-based food replicas, such as tempura and lettuce, that look just like the real thing! Gujo City is the birthplace of these replicas often displayed in restaurant storefronts, and products made here are sold all over Japan.



**17 Hill of Humanity park and Chiune Sugihara Memorial Hall** **History**

Chiune Sugihara (1900-1986) was a Japanese diplomat who saved the lives of thousands of Jewish refugees by issuing them transit visas to Japan during the Second World War. These actions have received much praise and recognition from all over the world. The Hill of Humanity park and Chiune Sugihara Memorial Hall were built in Yaotsu to honor his achievements and preserve his memory for future generations.



**Mino 美濃 Southern GIFU**

**18 World Heritage Site Shirakawa-go** **World Heritage**

110 folk houses with roofs thatched in the *gassho*, or "praying hands," style stand in this quiet mountain village community. Shirakawa-go is a registered UNESCO World Heritage Site.



**19 Ayu Sweetfish** **Food**

*Ayu*, or sweetfish, are a freshwater fish native to the pristine waters of the Nagara River. Both *Ayu* and the Nagara River play an important part in the region's economy, history, and Culture. The fish are normally grilled simply with salt to accentuate the delicate flavor and texture of the meat. *Ayu* of the Nagara River system are designated as a Globally Important Agricultural Heritage System.



**23 Ogaki Festival** **Festivals**

The Ogaki Festival, held every year in May, is over 360 years old and is one of Japan's Important Intangible Folk Cultural Assets. At this festival 13 parade floats make their way through Ogaki's castle town, creating a very beautiful and rare atmosphere that can be enjoyed by all. This festival was designated as an Intangible Cultural Heritage by UNESCO in 2016.

**24 Historic Sekigahara Battlefields** **History**

Sekigahara was the site of the largest samurai battle in Japanese history. The battle of Sekigahara saw around 160,000 samurai fighting for control of the realm. The battlefields today are far different from how they were on that fateful day in 1600, offering beautiful views of the tranquil Japanese countryside. Flags and stone monuments remain to indicate where the military encampments of the Eastern and Western Armies once stood. There is also a museum offering more in-depth information about the battle, and the *zusho* generals that participated in it.



**22 Shirakawa-go Doburoku Festival** **Festivals**

This festival is held at three shrines in Shirakawa-go to celebrate the harvest in autumn. *Doburoku*, a ceremonial sake brewed at the shrines, plays an important role in the festival.



**23 Gassho-zukuri Thatched Roof Houses in Shirakawa-go** **World Heritage**

A traditional Japanese fireplace called an *irori* graces the communal rooms of most of these majestic houses. Guests can even stay the night in an authentic *gassho* style folk house.



**25 Takayama Festival** **Festivals**

The Takayama Festival is held in April and October every year and is counted among Japan's three most beautiful festivals. During this festival, which was designated as an Intangible Cultural Heritage by UNESCO in 2016, you can see the extravagant workmanship of the traditional floats up-close.



**26 Furukawa Festival** **Festivals**

The Furukawa Festival proclaims the arrival of spring to the Hida region and is one of the three largest festivals of its kind in Japan. A crowd of energetic, bare-chested men parade to the beat of large *taiko* drums. This festival was designated as an Intangible Cultural Heritage by UNESCO in 2016.



**Hoba Miso** **Food**

Regional miso, or soy bean paste, is grilled with fresh ingredients over a magnolia leaf.



**27 Gero Hot Spring** **Hot Springs**

Counted as one of the three most famous hot springs in Japan, the luxurious waters of Gero are said to work wonders on the skin. The riverbed features a natural outdoor bath (pictured here) that can be used for free.

**Hida 飛騨 Northern GIFU**



**28 Hida Shunkei Lacquer Ware** **Crafts**

Clear lacquer is applied to wood to bring out the natural beauty of the grain.



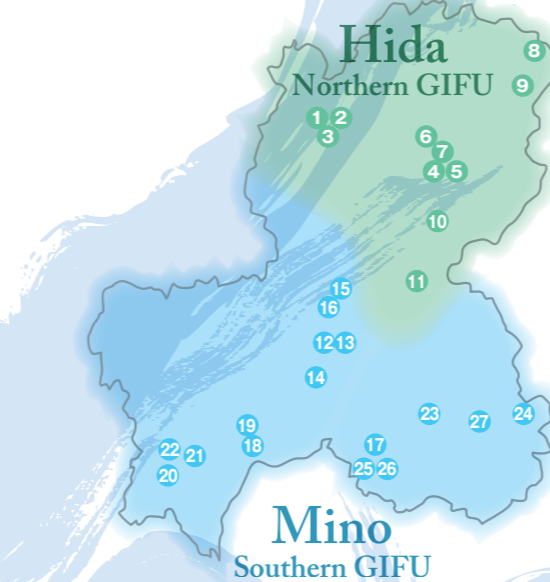
**Hida Beef** **Food**

Hida brand beef is a succulent meat that melts in your mouth. Try it as steak, sushi, Japanese hotpot, or a number of other ways in which it is guaranteed to satisfy your taste buds!

**GIFU Sightseeing Spots**

Uncover, Rediscover – Experience Gifu

Gifu's central location means easy access from anywhere in the nation. As a central crossroads of east and west Japan, Gifu boasts a unique history and diverse culture, which has been fostered by the prefecture's rich yet diverse natural terrain. Gifu Prefecture is truly a place that brings together the greatness of Japan.



**29 Shinhotaka Ropeway** **Nature**

Shinhotaka boasts Japan's first and only two-tiered gondola. Visitors enjoy a panoramic view of the Northern Japan Alps from the observation deck, which stands at an altitude of 2,156 m.



**30 Okuhida Hot Spring Villages** **Hot Springs**

This region's abundant natural hot springs make it number one in Japan in terms of the sheer number of open-air baths. Enjoy the feeling of freedom through the year's four seasons.

**31 Osaka Falls** **Nature**

There are over 200 pristine waterfalls at the base of Mt. Ontake. Explore the many falls and enjoy the natural beauty of the forest by taking one of the various hiking courses.

**Mino 美濃 Southern GIFU**

**32 Ji-kabuki and Playhouses** **Tradition**

Referring to a variety of kabuki that is performed not by professionals but by local amateurs, *ji-kabuki* is a tradition that has continued for hundreds of years. Many *ji-kabuki* playhouses remain in the eastern region of Gifu Prefecture, and the plays and choreography particular to this practice continue to be protected and passed down by the locals.



**33 Magome-juku (Nakasendo)** **History**

This post town once thrived along the Nakasendo, a road that connected Edo (Tokyo) and Kyoto during the Edo Period (17th – 19th century). The area has been beautifully restored and the cobblestone streets, latticed storefronts, tea houses, and gift shops bring one back to a time long ago.

**34 Mino Yaki Ceramic Ware** **Activities**

Mino's pottery has a history of over 400 years and was developed in this region, which includes the cities of Tajimi, Toki, and Mizunami. This area currently boasts over a 60% share of ceramic ware production nationally. Visit the many galleries and exhibitions and even create your own pottery piece.



**35 Kobei-gama Workshop** **Crafts**

This ceramics studio has a history of 200 years, and the works produced here are representative of Mino *Yaki*. Tour the exhibition hall, which is a reconstruction of a traditional folk house, and shop for ceramics.



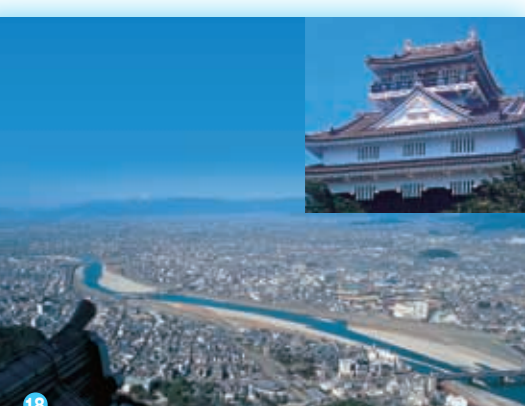
**Kurikinton** **Food**

The mountain cities of Nakasugawa and Ena are famous for their *kurikinton*, or chestnuts, which are the main ingredient in this traditional autumn sweet.



**36 Ena Valley** **Nature**

Ena Valley is a man-made lake formed by the construction of the Oi Dam. Sightseeing boats cruise upon its waters, showing visitors the magnificent rock formations that line the valley's banks, as well as seasonal attractions such as cherry blossoms in spring and changing leaves in autumn.



**37 Mt. Kinka & Gifu Castle** **History**

Mt. Kinka rises to an elevation of 329 m in the center of Gifu City. Gifu Castle stands at its peak with the beautiful waters of the Nagara River flowing at its base. The top floor of the castle keep features an incredible panoramic view of the surrounding area. Visitors can also ride a cable car up the mountain.

**38 Cormorant Fishing on the Nagara River** **Tradition**

This ancient fishing method known as *ukai*, in which cormorants are used to catch fish, has been a tradition in Gifu for 1,300 years. The six boats with their beacons of flame and the cormorant fishing masters directing their birds make for a fantastic sight.

